



2 The Milk Barn, Canterbury, CT3 4FZ
£2,500 Per month



2 The Milk Barn, Canterbury, CT3 4FZ £2,500 Per month

Zest Homes Sales and Lettings LTD are pleased to present this exclusive and stunning luxury home that is available to the rental market.

The property has been completed to an extremely high standard and includes Neff integrated kitchen appliances. The Milk Barn offers spacious living accommodations in the village of Broad Oak, yet within easy reach of Canterbury City Centre. Sweech Farm is located on a busy road, but once inside, you could be located in a tucked-away location.

Each property includes a high-speed fiber-optic broadband connection, landscaped gardens, and off-street allocated parking.

With country farmland views, this property certainly has the wow factor. As you enter the home, you will be greeted with an inviting large entrance hall that leads to the good size sitting room, W/C with a utility room, and onto the rear of the house, which boasts a bright and airy open-plan kitchen/dining area. Perfect for entertaining family and friends.

On the first floor, we have the family bathroom and four double bedrooms, with the master benefiting from an En-suite. On the second floor, a great light and bright, versatile space.

Description

Zest Homes Sales and Lettings LTD are pleased to present this exclusive and stunning new luxury home which is available to the rental market.

The property has been completed to an extremely high standard and includes Neff integrated kitchen appliances, 2 The Milk Barn offers spacious living accommodation located in the village of Broad Oak yet still within easy reach of Canterbury City Centre.

Each property includes, high speed fibre optic broadband connection , landscape gardens and off street allocated parking.

With country farmland views this property certainly has the wow factor. As you enter the home you will be greeted with an inviting large entrance hall which leads to the good size sitting room, W/C with utility room and onto the rear of the house which boasts a bright and airy open plan kitchen/dining area. Perfect for entertaining family and friends.

On the first floor we have the family bathroom and four double bedrooms , with the master benefiting from an En-suite. On the second floor a great light and bright versatile space. Perfect as the main principle master bedroom or a large home office depending on your needs. With an good size En-suite shower room and a large walk in dressing room.

Situation

Milk Barn, Broad oak is located within easy access of the local village and only 3 miles from the City of Canterbury which is known for its highly regarded schools , and Universities as well an array of shops and eateries. Commuting to London with the high speed rail links to St Pancras.

Tenancy Information

Rent Upfront: £2500 (dog or cat considered)

Deposit: £2711

Refundable Holding Fee: £576

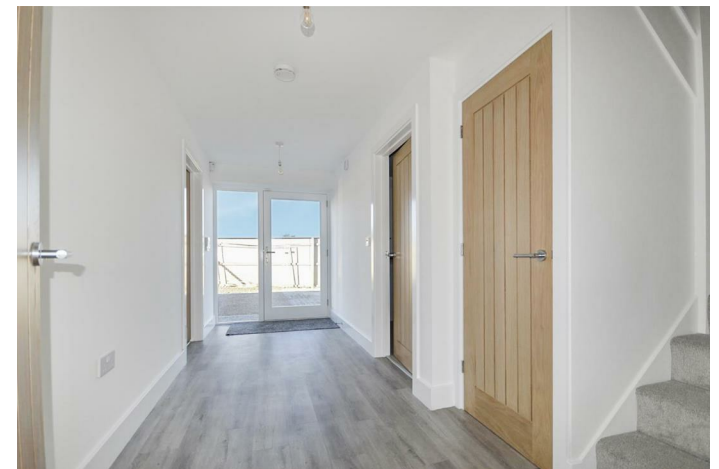
Council Tax Band G

EPC Rating B

Zest Homes Conduct their referencing through

Canopy : This link will help guide you:

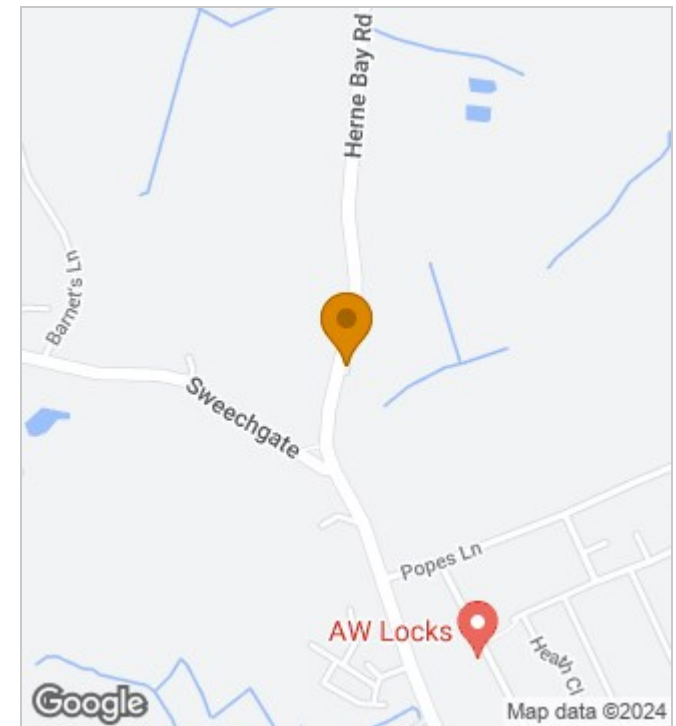
<https://go.canopy.rent/E1TSk8LXBzafFDDt8>





Total floor area 247.4 sq.m. (2,663 sq.ft.) approx

This plan is for illustration purposes only and may not be representative of the property. Plan not to scale. Powered by PropertyBox



Energy Efficiency Rating

	Current	Potential
Very energy efficient - lower running costs		
(92 plus) A		95
(81-91) B	89	
(69-80) C		
(55-68) D		
(39-54) E		
(21-38) F		
(1-20) G		
Not energy efficient - higher running costs		
England & Wales	EU Directive 2002/91/EC	

190 High Street, Herne Bay, Kent, CT6 5AP
Tel: 01227 949291 | Email: sales@zesthomes.uk
www.zesthomes.uk

1. Money Laundering Regulations: Please note all sellers and intended purchasers will receive an 'On Boarding' link to verify their identity. This is a legal requirement prior to a sale or purchase proceeding.
2. All measurements stated on our details and floorplans are approximate and as such can not be relied upon and do not form part of any contracts.
3. Zest Homes have not tested any services, equipment or appliances and it is therefore the responsibility of any buyer/tenant to do so.
4. Photographs and marketing material are produced as a guide only and legal advice should be sought to verify fixtures and fittings, planning, alterations and lease details.
5. Zest Homes hold the copyright to all advertising material used to market this property.